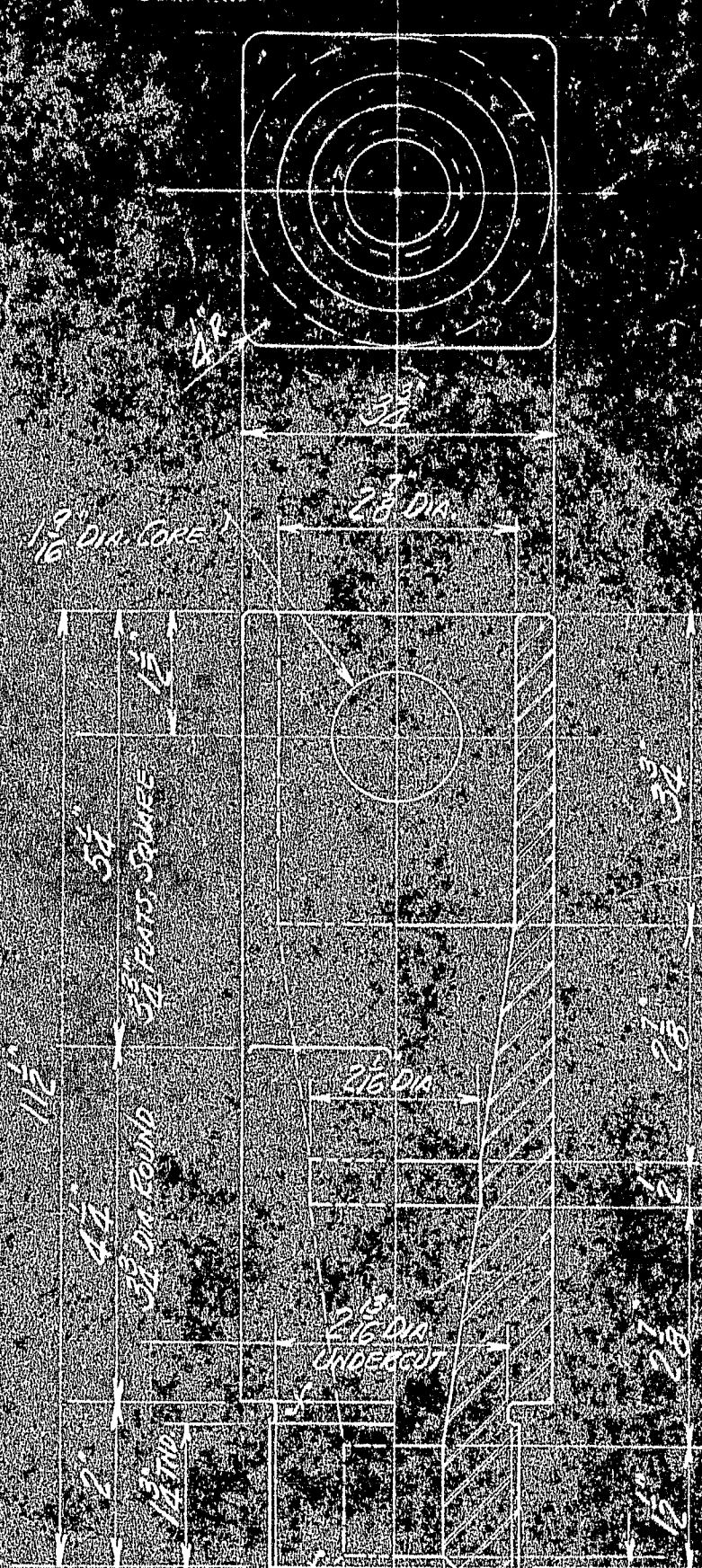
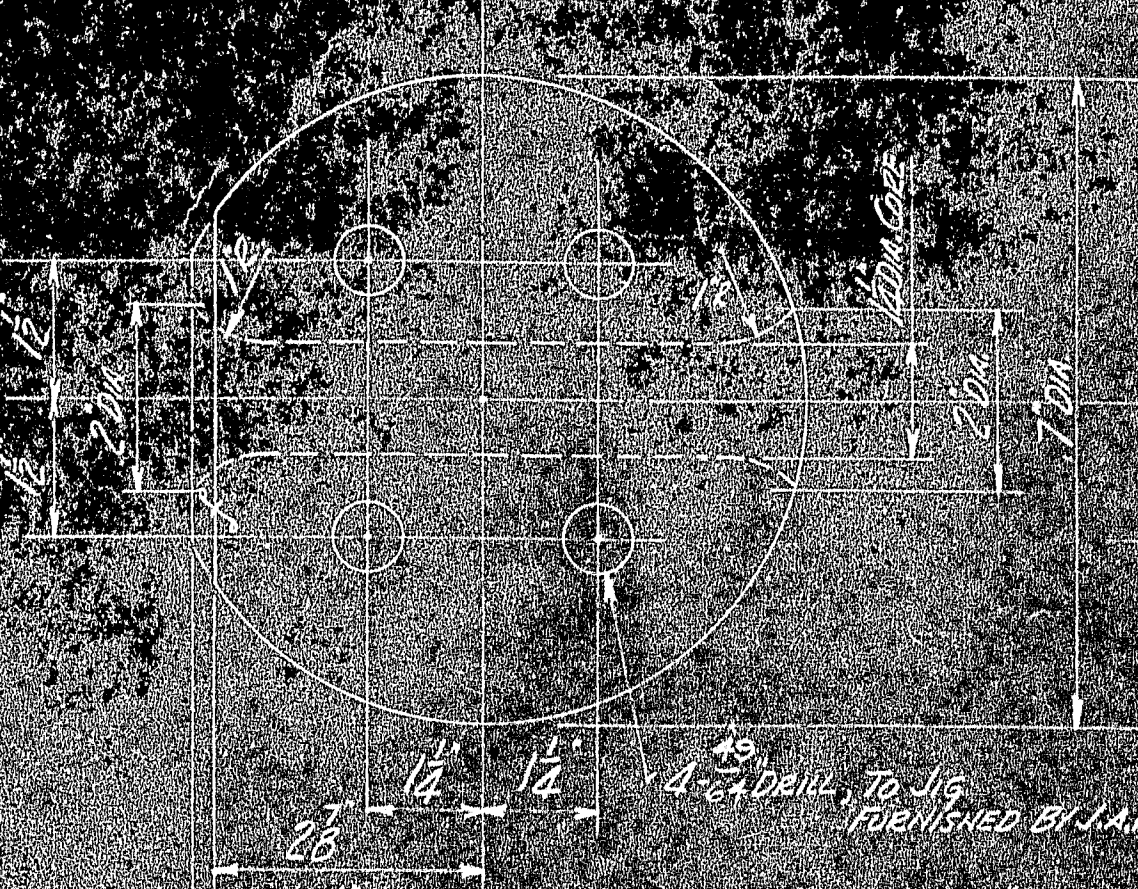


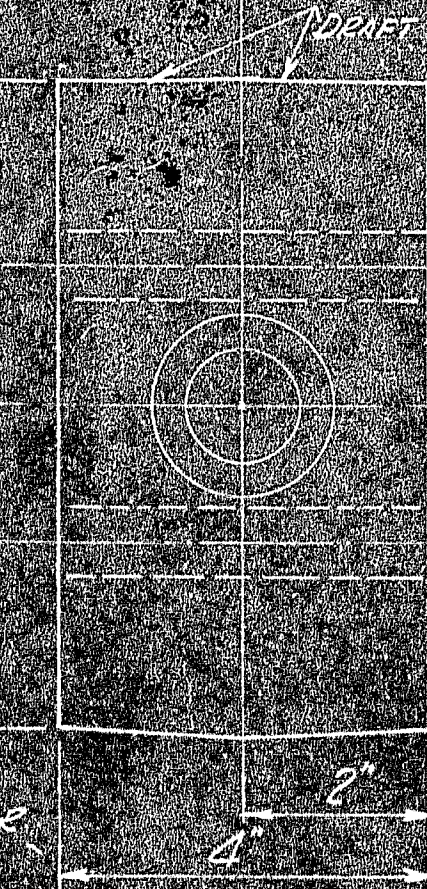
BR150-3A SOCKET
CUT TO LENGTH IN FIELD



BR150-3B SOCKET
CUT TO LENGTH IN FIELD



BR150-3C BLOCK
CUT TO LENGTH IN FIELD



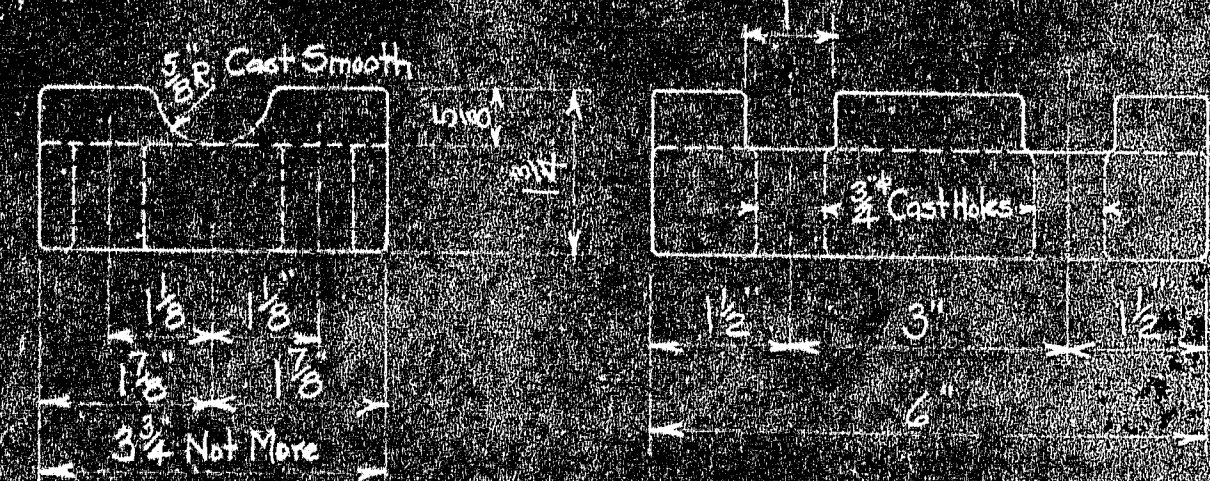
BR150-3D SLEEVE



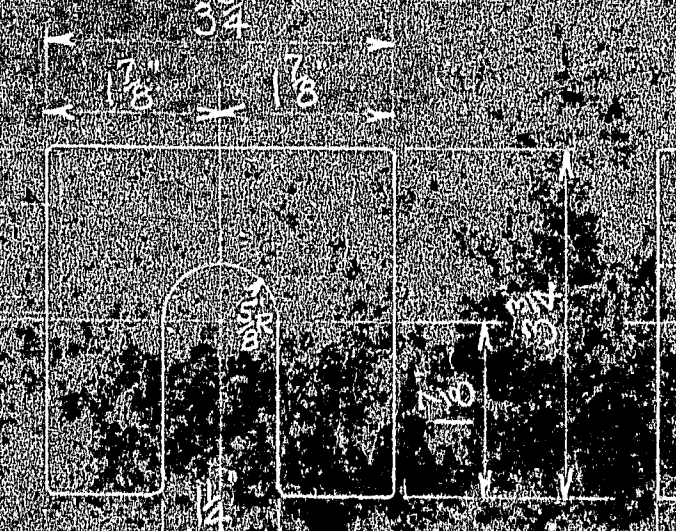
BR150-3E BOLT
CUT TO LENGTH IN FIELD



BR150-3F PIN
CUT TO LENGTH IN FIELD



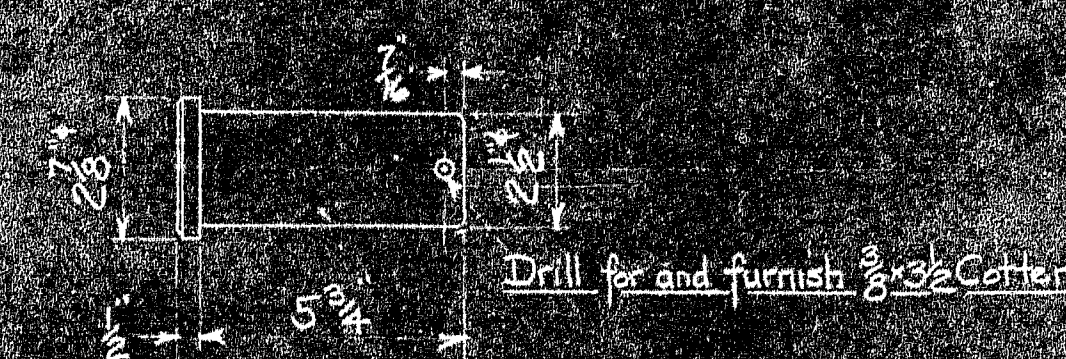
BR150-3G PIN
CUT TO LENGTH IN FIELD



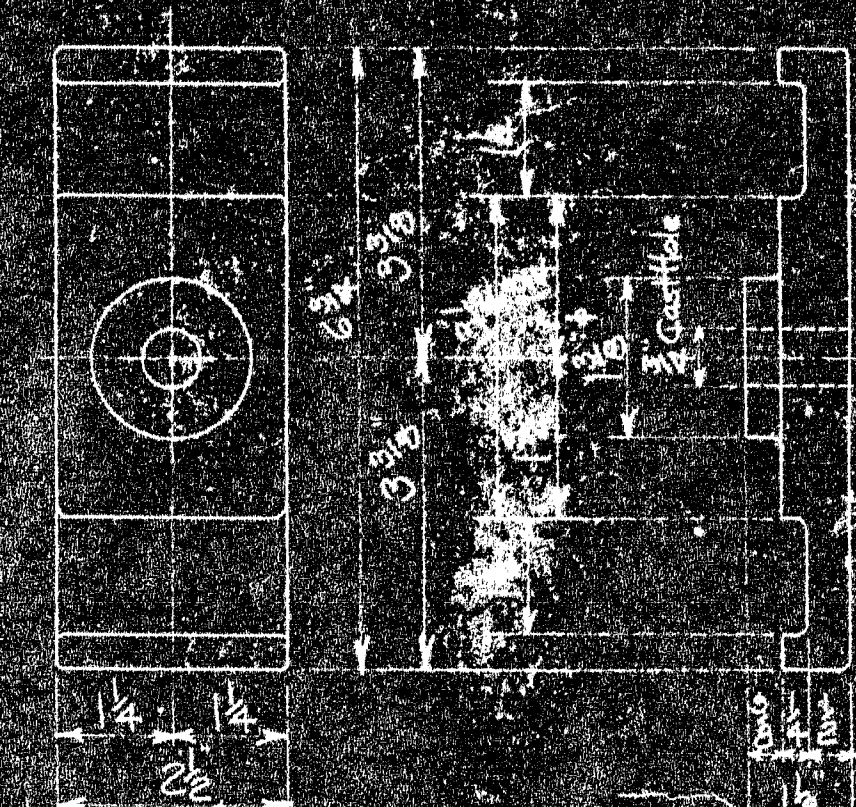
BR150-3H CAP



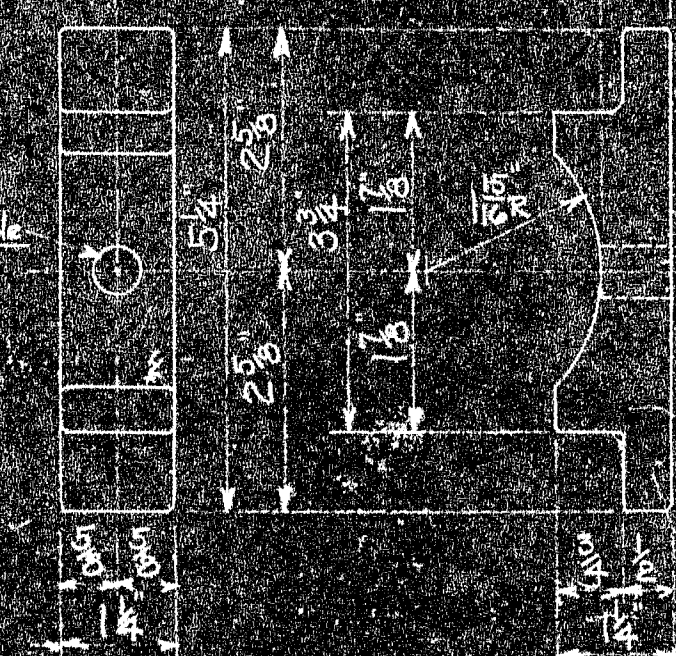
BR150-3I CAP



BR150-3J CAP



BR150-3K SHIM



BR150-3L CAP

MARK	REQ'D	MAT'L	REQ. NO.	NAME	REMARKS
BR150-3A	152	SH. 414	5859	Deer Socket for 1 1/2 inch	
BR150-3B	72	SH. 414	5859	Deer Socket for 1 1/2 inch	
BR150-3C	21	SH. 414	5859	Deer Socket for 1 1/2 inch	
BR150-3D	21	SH. 414	5859	Deer Socket for 1 1/2 inch	
BR150-3E	21	SH. 414	5859	Deer Socket for 1 1/2 inch	
BR150-3F	21	SH. 414	5859	Deer Socket for 1 1/2 inch	
BR150-3G	21	SH. 414	5859	Deer Socket for 1 1/2 inch	
BR150-3H	21	SH. 414	5859	Deer Socket for 1 1/2 inch	
BR150-3I	21	SH. 414	5859	Deer Socket for 1 1/2 inch	
BR150-3J	21	SH. 414	5859	Deer Socket for 1 1/2 inch	
BR150-3K	21	SH. 414	5859	Deer Socket for 1 1/2 inch	
BR150-3L	21	SH. 414	5859	Deer Socket for 1 1/2 inch	

PAINT: one shop coat red lead except sockets 3A+3B+3F+3G+3H+3I+3J+3K+3L to be given a coat of grease

APPROVED	DATE	SCALE	SERIAL	SHEET
ROBINSON AND STEINMAN	FEB 28 1944	DES	TR	CH. DR.
CH. DR.	ENG'R	CH	CH	CH

JOHN A. ROEBLING'S SONS CO., TRENTON, N.J.	DEER ISLE BRIDGE REINFORCEMENT SOCKET DETAILS
BR150-3A	152
BR150-3B	72
BR150-3C	21
BR150-3D	21
BR150-3E	21
BR150-3F	21
BR150-3G	21
BR150-3H	21
BR150-3I	21
BR150-3J	21
BR150-3K	21
BR150-3L	21

